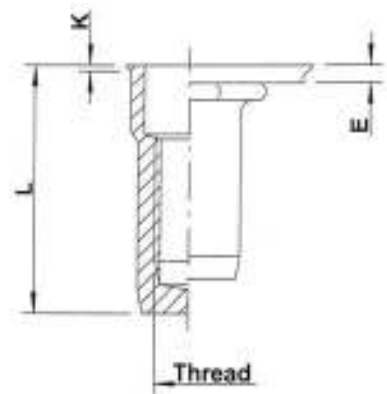
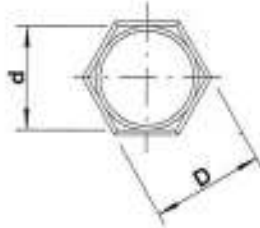
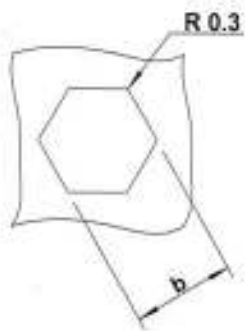


Stainless Steel 304

Low profile head
Semi-hexagonal shank
Closed end

HUKX



Stainless Steel 304

THREAD	TYPE	E = grip	L	b ^{+0,1} = hex hole	d = hex shank	D = hex head	K	kg/1000	ORDER CODE	BOX Q
M4	HUKX20	0,5-2,0	15,5	6,0	6,0	6,5	0,5	1,8	544 620	5000
M5	HUKX30	0,5-3,0	18,0	7,0	7,0	7,5	0,5	2,7	545 620	4000
	HUKX50	3,0-5,0	20,5					2,9	545 640	3000
M6	HUKX30	0,5-3,0	21,5	9,0	9,0	9,5	0,5	5,7	546 540	2000
	HUKX50	3,0-5,0	23,5					6,1	546 565	2000
M8	HUKX30	0,5-3,0	24,0	11,0	11,0	11,5	0,5	8,7	548 320	1000
	HUKX55	3,0-5,5	26,5					9,1	548 340	1000

M10: programme in progress

All dimensions in mm

Technical data subject to modification

