



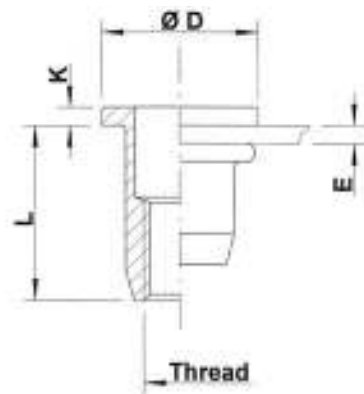
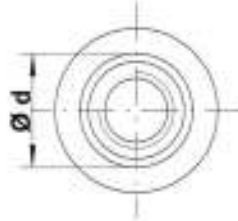
Stainless Steel 316

(contains > 2% Molybden)

Flat head
Round shank
Open end

UPO / SPO

extra high
corrosion resistance



Stainless Steel 316

THREAD	TYPE	E = grip	L	b ^{+0,1} = drill dia	d = shank dia	D	K	kg/1000	ORDER CODE	BOX Q
M4	UPO20	0,5-2,0	11,0	6,0	6,0	9,0	1,0	1,5	554 010	3000
M5	UPO30	0,5-3,0	11,5	7,0	7,0	10,0	1,0	1,8	555 040	2000
M6	UPO30	0,5-3,0	14,5	9,0	9,0	12,0	1,5	4,1	556 020	1000
	UPO50	3,0-5,0	16,5					4,5	556 035	1000
M8	UPO30	0,5-3,0	16,0	11,0	11,0	15,0	1,5	6,1	558 010	500
M10	SPO35	0,8-3,5	21,5	13,0	13,0	17,0	1,5	10,4	550 600	250

Availability & other versions: please contact our Sales Department

All dimensions in mm

Technical data subject to modification

