

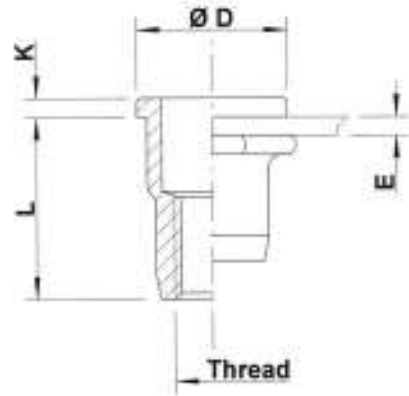
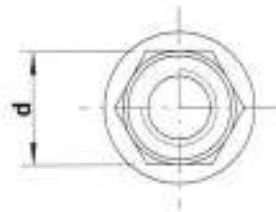
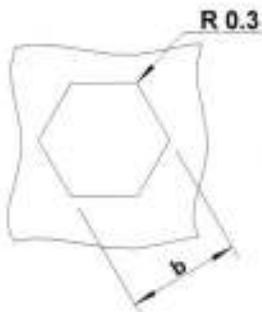


**Stainless Steel 316**  
(contains > 2% Molybden)

Flat head  
Semi-hexagonal shank  
Open end

**HUPO**

extra high  
corrosion resistance



Stainless Steel 316

THREAD	TYPE	E = grip	L	b <sup>+0,1</sup> = hex hole	d = hex shank	D	K	kg/1000	ORDER CODE	BOX Q
M4	HUPO20	0,5-2,0	11,0	6,0	6,0	9,0	1,0	1,5	554 500	2500
M5	HUPO30	0,5-3,0	11,5	7,0	7,0	10,0	1,0	1,8	555 500	2000
M6	HUPO30	0,5-3,0	14,5	9,0	9,0	12,0	1,5	4,0	556 460	1000
M8	HUPO30	0,5-3,0	16,0	11,0	11,0	15,0	1,5	6,1	558 250	500

**M10: programme in progress**

**Availability & other versions: please contact our Sales Department**

*All dimensions in mm*

*Technical data subject to modification*

