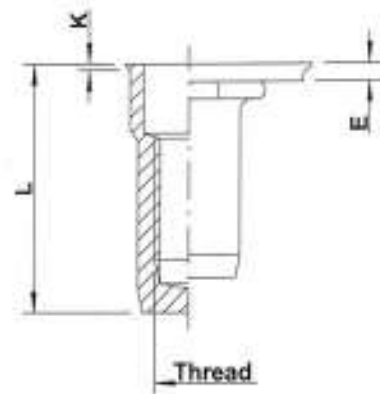
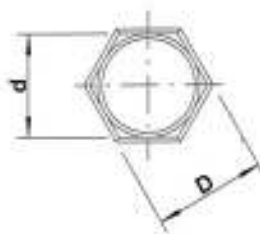
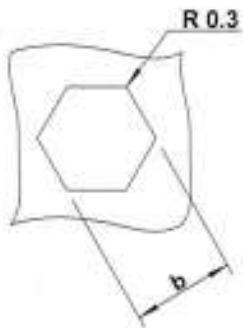


Stainless Steel 316 (contains > 2% Molybden)

extra high
corrosion resistance

Low profile head
Semi-hexagonal shank
Closed end

HUKX



Stainless Steel 316

THREAD	TYPE	E = grip	L	b ^{+0,1} = hex hole	d = hex shank	D = hex head	K	kg/1000	ORDER CODE	BOX Q
M4	HUKX20	0,5-2,0	15,5	6,0	6,0	6,5	0,5	1,8	554 620	2500
M5	HUKX30	0,5-3,0	18,0	7,0	7,0	7,5	0,5	2,7	555 620	2000
M6	HUKX30	0,5-3,0	21,5	9,0	9,0	9,5	0,5	5,7	556 540	1000
M8	HUKX30	0,5-3,0	24,0	11,0	11,0	11,5	0,5	8,7	558 320	500
	HUKX55	3,0-5,5	26,5						558 340	500

M10: programme in progress

Availability & other versions: please contact our Sales Department

All dimensions in mm

Technical data subject to modification

