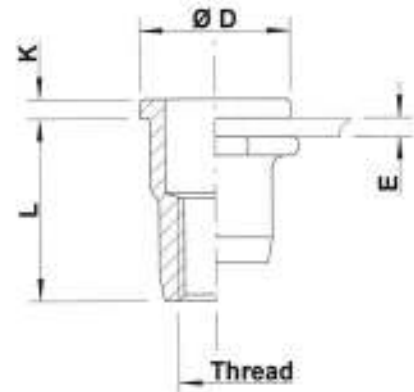
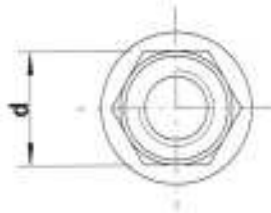
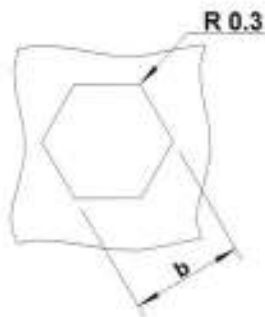


Steel

Flat head
Semi-hexagonal shank
Open end

Zinktop, Cr^{VI}- free (A)
Zinc plated, yellow passivated (B)

HUPO



Steel

THREAD	TYPE	E = grip	L	b ^{+0,1} = hex hole	d = hex shank	D	K	kg/1000	ORDER CODE (A)	ORDER CODE (B)	BOX Q
M12	HUPO40	1,0-4,0	25,0	16,0	16,0	23,0	2,0	19,6	522 509	522 500	350

All dimensions in mm
Technical data subject to modification

