

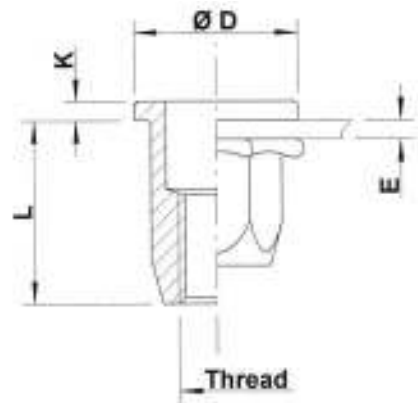
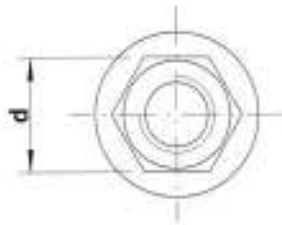
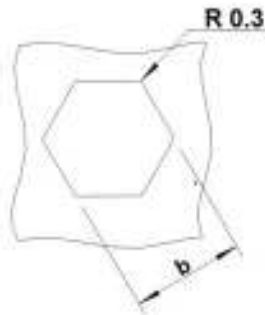


Steel

Flat head
Hexagonal shank
Open end

Zinktop, Cr^{VI}- free (A)
Zinc plated, yellow passivated (B)

HUPO / HSPO



Steel

| THREAD | TYPE | E = grip | L | b ^{+0,1} = hex hole | d = hex shank | D | K | kg/1000 | ORDER CODE (A) | ORDER CODE (B) | BOX Q |
|--------|--------|-------------|------|------------------------------------|---------------------|------|-----|---------|----------------------|----------------------|----------|
| M4 | HUPO20 | 0,5-2,0 | 10,0 | 6,0 | 6,0 | 9,0 | 1,0 | 1,4 | 524 589 | 524 580 | 7000 |
| M5 | HUPO30 | 0,5-3,0 | 13,0 | 7,0 | 7,0 | 10,0 | 1,0 | 2,3 | 525 569 | 525 560 | 4000 |
| M6 | HUPO30 | 0,5-3,0 | 14,5 | 9,0 | 9,0 | 13,0 | 1,5 | 4,7 | 526 529 | 526 520 | 2000 |
| | HUPO55 | 3,0-5,5 | 16,5 | | | | | 4,8 | 526 549 | 526 540 | 1750 |
| M8 | HUPO30 | 0,5-3,0 | 16,5 | 11,0 | 11,0 | 16,0 | 1,5 | 7,0 | 528 482 | 528 480 | 1200 |
| | HUPO55 | 3,0-5,5 | 19,0 | | | | | 7,5 | 528 509 | 528 500 | 1000 |
| | HUPO80 | 5,5-8,0 | 22,0 | | | | | 8,1 | 528 609* | 528 600* | 750 |
| M10 | HSPO35 | 0,8-3,5 | 21,0 | 13,0 | 13,0 | 19,0 | 2,0 | 11,6 | 520 649 | 520 640 | 700 |
| | HSPO60 | 3,5-6,0 | 23,5 | | | | | 12,3 | 520 659 | 520 650 | 500 |

* **Non-stock item:** minimum order quantity required after depletion of stock

All dimensions in mm

Technical data subject to modification

