

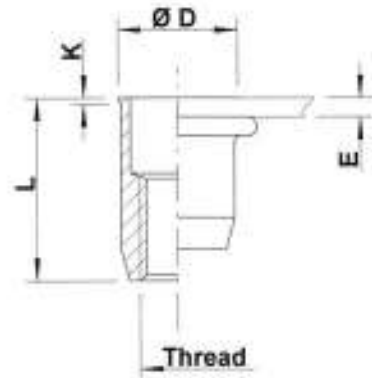
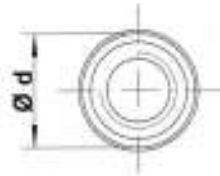


Steel

Low profile head
Round shank
Open end

Zinktop, Cr^{VI}- free (A)
Zinc plated, yellow passivated (B)

UKO



THREAD	TYPE	E = grip	L	b ^{+0,1} = drill dia	d = shank dia	D	K	kg/1000	ORDER CODE (A)	ORDER CODE (B)	BOX Q
M4	UKO30	0,5-3,0	10,75	6,0	6,0	6,5	0,5	1,1	524 529	524 520	10000
	UKO50	3,0-5,0	12,75					1,2	-	524 530*	7500
M5	UKO30	0,5-3,0	12,0	7,0	7,0	7,5	0,5	1,6	525 469	525 460	5000
	UKO55	3,0-5,5	15,0					1,8	525 489	525 480	4000
M6	UKO30	0,5-3,0	14,5	9,0	9,0	9,5	0,5	3,4	526 469	526 460	3000
	UKO55	3,0-5,5	16,5					3,7	526 489	526 480	2500
M8	UKO30	0,5-3,0	16,0	11,0	11,0	11,5	0,5	5,0	528 449	528 440	2000
	UKO55	3,0-5,5	18,5					5,5	528 459	528 450	1500
M10	UKO35	0,8-3,5	19,5	12,5	12,4	12,9	0,5	6,7	520 459	520 450	1250

All dimensions in mm
Technical data subject to modification

